

Introducing Annie Hunt Burriss and Nancy Keita 2

Introducing Wayne Leon Campus Resources Alumni News 3

Introducing Kerry Reid Around Campus: Student Activities 4

Feature Interview: Introducing Chuck Wingo 5

BACK PAGE

Staff Contacts Campus Information 6



The Oglethorpe Night Cap

Make a Life. Make a Living. Make a Difference.

Editor:
Nick A. Moreno

Faculty Advisors:
Prof. Camilla Cruikshank
Dr. Anne Rosenthal

Staff Writers:
David Whitmore
Jennifer Beck Ross

Staff Advisor:
Nancy Keita

Staff Photographer:
Julie Benz-Pottie

Welcome New and Returning Students



A big welcome to all new and returning evening students. For those of you new to the program, there are many new changes taking place. Those of you returning may have already noticed some of the differences.

First our newsletter has a new name, a new look and new staff members. Writers David Whitmore and Jennifer Beck Ross and photographer Julie Benz-Pottie are your new newsletter team. Our goal this year is to provide a newsletter that serves as a one stop shop where you can find important information about campus affairs, scholarship opportunities, upcoming events and local restaurant discounts and coupons.

Second, the Student Activities Committee for evening students is up and running. We have already produced three theatre events: *Arrivals*, *Departures* and *Better*

Places To Go. We hosted an information table during the Fall Fling where students were able to sign up for the Student Activities Committee, Theatre Team and Newsletter Team.

There are indeed wonderful things happening and great activities in the works but we still need you, your input and your ideas. This newsletter and the Student Activities Committee exist for you. Get involved. Send your ideas to n.moreno@oglethorpe.edu or call us on the Student Activities Committee phone line at 404.504.3459.

Again, hello to our new students and welcome back to our returning students. Have a safe and happy holiday season.

Nick Moreno
2006 - 2007 Newsletter Editor



Word on Campus

Announcement: Effective July 24, 2006, University College became Oglethorpe University's evening degree program. Students currently enrolled or planning to enroll in the evening degree program will see no changes to the curricula they follow, the courses they take, the manner in which they pay or the campus opportunities they enjoy. Oglethorpe's evening degree program will continue to offer courses that advance careers, schedules that work with the rest of your life and accelerated sessions that move you quickly toward your goals.

Please contact the evening degree program if you have any questions regarding this change.

Around the Campus

Introducing Annie Hunt Burriss



Annie Hunt Burriss serves Oglethorpe University as associate provost for the evening degree program and deputy to the president for community relations. An eighth generation Georgian from Elberton, she earned an associate of fine arts from Sullins College in Bristol, Virginia, a bachelor of fine arts from Stephens College in Columbia, Missouri, and a master of city planning from the Georgia Institute of Technology. Georgia's first woman to become a certified economic developer, she won the Southern Industrial Development Council award for her thesis at the University of Oklahoma. She is

currently pursuing an executive doctorate in higher education management at the University of Pennsylvania. Her 20 years in economic development activities includes pioneering a state university system level linkage of 34 institutions in the creation of knowledge jobs and as a loaned executive to the governor's office for a variety of leadership roles. Burriss has been named five times as one of *Georgia Trend's* 100 Most Influential Georgians and named one of the Women to Watch by the *Atlanta Business Chronicle*.

Q: What do you consider the strengths of the evening degree program?

A: Oglethorpe University is Atlanta's leading liberal arts university and we are its distinctive accelerated evening degree program. OU's first-rate teaching faculty and the intimacy of small classes offers Atlanta's adult learners the means to broaden their minds and to expand their life opportunities. Whose soul could not be fed by the beautiful oasis Oglethorpe is on Peachtree Road? Where Gothic splendor sits on grassy, woody Piedmont rolling hills and the sun can set and rise in dramatic fashion, depending on when you are getting your studying done!

Q: What is the greatest benefit of working with the evening degree program?

A: It's the caliber of people... the students whom we serve, the faculty whom we engage and the team in place to support it all.... Nancy, Wayne, Kerry, Courtney and me, not to mention Lisa Littlefield in Career Services, William Morse and his staff in IT Services, Anne Salter and her Philip Weltner Library crew and certainly not least, Chuck Wingo and the OU Bookstore crew. Very importantly, the new leadership of President Schall and his Cabinet are key evening degree program supporters and the wise guidance of the faculty Council for the evening degree program keeps us reaching for academic excellence.

Q: What advice do you have for evening degree students?

A: Carpe Diem et Nescet Cedere!

Q: If you could invite anyone to visit the Oglethorpe campus who would you choose and why?

A: Lifelong learners of every age and stage. They are the ones who will truly live all the days of their lives!

Q: What are your goals for the evening degree program in five years?

A: To be known as Atlanta's most distinctive and one of the nation's most highly regarded and prestigious accelerated degree program for adult learners. Further, I believe OU can be into its third year of a Master of Liberal Arts program that folks are clamoring to get into and we are launching a highly distinctive limited residence Master of Fine Arts creative and theatre writing program that will become the hot and sweet spot for adults advancing their creative gifts.

Introducing Nancy Keita



After two years of undergraduate study at Earlham College in Indiana, Nancy moved from New York to California. She completed her undergraduate studies at San Francisco State University earning a bachelor's in psychology. She returned to her alma mater one year later for her master's degree in broadcast communication arts. Nancy worked at Sierra Club headquarters in the public affairs office, both as a public information officer and as Sierra Club's media coordinator. She moved across the Bay to Oakland, and after the birth of her first child, went to work for the University of

California, Berkeley's Department of City and Regional Planning. There she learned the ropes of academic administration — in admissions, student advising, scheduling and faculty planning. Nancy moved to Atlanta six years ago and worked at *Atlanta Parent Magazine* before coming back to academia here at Oglethorpe. Her work in the Oglethorpe registrar's office further cemented her broad-based knowledge of academic administration and Oglethorpe University's academic structure.

As evening degree program director, Nancy's primary responsibility is to plan and manage the financial and operational success of the evening degree program. She develops the curriculum, staffs the department, recruits adjunct faculty, reviews faculty performance and evaluates program surveys and assessments. The director also assists the associate provost in developing the strategic directions and allocation of resources for the evening degree program.

Q: What do you consider the strengths of the evening degree program?

A: The quality of its students and dedication of its faculty. It's a focused program, based in the liberal arts, which allows students great flexibility in transferring credits from other schools and in balancing life responsibilities.

Q: What is the greatest benefit of working with the evening degree program?

A: The greatest advantage of working with the evening degree program can be summed up in two words: no parents! Dealing with parent questions and concerns was a big part of working in the registrar's office.

Q: What advice do you have for evening degree students?

A: I would advise evening degree students to declare their major early and work on their major requirements consistently — do not leave a chunk of major requirements to the end of your time at OU.

Q: If you could invite anyone to visit the Oglethorpe campus who would you choose and why?

A: I would invite Andre Agassi to campus. He is someone with a great work ethic, he's of our student's generation and he has used his success in tennis to do good things, especially in education for young people. Oh, and he's got a bald head and a killer smile — just like my husband!

Q: Where do you see the evening degree program in five years?

A: The evening degree program will continue to attract great students in greater numbers, so that in five years we can offer more courses, more majors and more student community events.



Introducing Wayne Leon



I have been married for eight years to my beautiful wife Muriel. We are the proud parents of three children, Seth, Mikayaha and Sydney. I was born in Kingston, Jamaica, to a Chinese father and a native Jamaican mother. When I was eight years old my mother moved my siblings and I to the United States to give us the opportunity for better education and an overall better quality of life.

I entered college in 1989 where I earned a Bachelor of Arts from Sacred Heart University in Fairfield, Connecticut. I later went on to complete a Master of Arts in Teaching in 2001, also from Sacred Heart. My career in post-secondary education started in 1996 at my alma mater. While employed at Sacred Heart I worked in the office of continuing education where my duties were to recruit new students and develop new relationships with corporations and organizations in New Haven and Fairfield counties. I was instrumental in the growth and development of SHU's off site and on-site degree programs.

After leaving Sacred Heart University I moved onto Gateway Community College in New Haven, Connecticut. There, I was instrumental in developing family programs, off-campus residential programs and other divisional activities. At Gateway, I held the position of associate director of admissions. My duties were to recruit, counsel and give academic guidance to minority students from traditional as well as non-traditional high schools. As the director of student activities I coordinated student events, leadership workshops and internship opportunities for students at various companies throughout New Haven and Fairfield counties. In addition, I served as the athletic director, coordinating eligibility requirements for student athletes that participated in NJCAA sanctioned athletic programs. I established intramural basketball, softball, soccer, volleyball and field hockey. I engaged both faculty and staff in city-wide basketball and softball leagues. Finally, I assisted with the design and development of the *Student Handbook*, *Student Organization/Advisors Handbook* as well as the *Student Activities Calendar*. In addition, I implemented a structured freshman and transfer student orientation program.

In the 2002 academic year, Gateway Community College had less than 5,000 commuter students with a vision of becoming a leading community college in the Northeast. As the associate director of admissions, I was instrumental in creating new markets and rebuilding existing markets while supervising a staff of 10 educational assistants and work-study students. I cultivated an environment that provided quality service to the students along with establishing a good rapport with other departments within the institution. I was instrumental in Gateway's success in recruiting and admitting a high number of culturally and racially diverse students to our specialized programs in allied health and engineering. As a member of Kappa Alpha Psi fraternity, I volunteered services at several community-based organizations in Connecticut. At the end of my tenure, Gateway was ranked number one in growth and number five in quality of public post-secondary education in the state of Connecticut.

I have also served on and chaired many committees, including the City of Bridgeport Gear-Up Program, State of Connecticut Gear-up Program, Talent Search, Bridgeport Allocations and 100 Black Men of America.

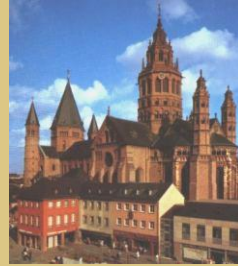
Campus Resources

Career Services

Interested in a new career? Try browsing the Oglethorpe eRecruiting Network. To set up your account, simply email your 10 digit petrel pass number and name to Lisa Littlefield at llittlefield@Oglethorpe.edu or call her at 404-364-8533 for more information.

Foreign Language

Interested in Learning German? - Please welcome



Arianne Theis from the University of Dortmund in Germany. Theis will teach German I and German II in the evening degree program in the spring. She also teaches Elementary and Intermediate German in the day program. If you are interested in learning German or have any questions about

the language, please contact Professor Theis at 404-364-8304 or atheis@oglethorpe.edu for more information.

Study Abroad—Scholarships Available

Scholarships are available for Oglethorpe's Study Abroad program. For more information, please contact Dr. Jeffrey Collins at 404-504-3452 or jcollins@oglethorpe.edu for more information.

Library

The library now has a calendar of instruction sessions on the web. Please visit the library's homepage at

<http://library.oglethorpe.edu/>

To find the calendar from the library homepage: click on the Information Literacy link under Services, and then click on Library Instruction Schedule under Quick Links.

We will soon post announcements about library instruction sessions under the News section of the homepage, so the



calendar link will be available there as well. Also, the assignment calculator is now available. From the library homepage click on Help and you will see the assignment calendar listed under Research Help.



Alumni News

Eleanor Abaya-Teye '06 completed an internship in Washington, D.C. with the Embassy of Ghana. Her internship led to a full-time position with the embassy as an executive officer for consular.

Eleanor will continue her studies in D.C. and is currently preparing for the L-SAT later this year.

Congratulations, Eleanor!



Introducing Kerry Reid



Growing up in Atlanta and finishing her high school education as a home school student, Kerry Reid has witnessed the value of gaining life experience and on-the-job training in order to enhance educational knowledge.

In 1998, Kerry decided to "take a road less traveled" by putting off going to college immediately after high school and as a 19 year-old began interning at the Georgia State Capitol and working for Senators Robert Lamutt and Casey Cagle. She served on staff with Impact Ministries, a non-profit organization which supplied volunteer interns to the State Senate and served as a chaplain ministry to the senators and their families. Kerry sharpened her leadership skills by serving as the intern coordinator, training and supervising 20 Senate interns each session and planning events for the State Senate.

Kerry continued to grow in her personal love for event planning. In 2001 she assisted the office of the State House Minority Leader and took on the role of event planner and fundraiser for the House Republican Caucus.

Kerry enjoyed incorporating her skills in event planning with her interests in government. Later in 2001, she started her own event planning business, Sensational Events. Kerry spearheaded several fundraising initiatives, raising \$100,000 for local candidates including Rep. Bill Hembree, Senator Mitch Seabaugh, former Senator Robert Lamutt and Rep. Lynn Westmoreland, now a U.S. Congressman. Kerry was responsible for planning and overseeing all the operations and details involved in hosting the events.

Taking a break from being a full-time event planner, Kerry was hired in 2003 as the office manager at Noble Properties, Inc. She was the executive assistant for Ed Noble and for Vivian DuBose. She had the unique privilege of gaining exposure to and a better understanding of commercial real estate by working for Noble, the original designer and builder of Atlanta's Lenox Square Mall.

After devoting several years to the government and corporate sector, Kerry desired to finish her undergraduate education. In May 2004, she accepted a position at Oglethorpe coordinating admission for the evening degree program and for the Master of Art in Teaching program. She is attending classes in the evening with the goal of finishing her Bachelor of Arts in Liberal Studies in organizational management.

One of Kerry's favorite personal interests and hobbies involves volunteering at her church where she loves mentoring teenage girls. She considers it both a privilege and personal calling to make an impact on the next generation of leaders.

Around Campus: Student Activities

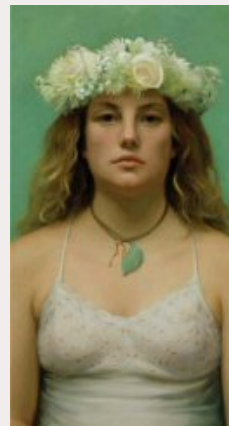
~Theatre~

Cabaret

November 30-December 2 at 8:00 p.m., December 1 at midnight
Music by John Kander. Book by Joe Masteroff. Lyrics by Fred Ebb.
Directed by Chadwick Yarborough
Conant Performing Arts Center
Tickets: \$10, \$5 for senior and students and free with Oglethorpe ID.
Call 404.504.1074 for tickets. Mature content.

This production departs from the usual flashy numbers by setting the cabaret precisely in the decadence and realities of pre-war Berlin and the rise of fascism. Accentuating both the sensuous and the hysterical, this darkly entertaining revival of a favorite musical is sure to be the toast of Mayfair!

~Art~



Oglethorpe University
Museum of Art

Slow Painting: A Deliberate Renaissance

September 17 to December 17, 2006



www.oglethorpe.edu/museum • 404-364-8555

The **Oglethorpe University Museum of Art** is proud to debut *Slow Painting: A Deliberate Renaissance*. This groundbreaking exhibition explores a new art movement focused on highly skilled figure painting harkening back to the Old Masters of Europe. *Slow Painting: A Deliberate Renaissance* brings together over 40 contemporary paintings and drawings by 22 artists. These New Realism artists intend to lead contemporary art into the future. With its attention to detail and beauty, slow painting is very rapidly gaining recognition as a bold new movement and is being lauded as New York's new "fast".

The exhibition runs through December 17. Admission is \$5 per person or free to members of Oglethorpe University Museum of Art, children under 12 and the Oglethorpe community with ID. The museum is open Tuesday through Sunday from noon until 5:00 p.m.



The Student Activities Committee for Evening Students Invites You To Attend

PIZZA PARTY AND A PLAY!

Saturday, December 2

Free Pizza Party! 7:00 p.m. Conference Room, Goodman Hall
Free Performance of Cabaret! 8:00 p.m. Conant Arts Center

Space is limited to the first 20 evening students who respond! RSVP's are required.
To sign up, please email Nick Moreno at n.moreno@oglethorpe.edu or call 404.504.3459

See You There!



Feature Interview: Introducing Chuck Wingo

By Jennifer Beck Ross



Flip-flops and newspapers, granola bars and CD-Rs, paper clips and dissection kits. In addition to books, the Oglethorpe University bookstore has almost anything one would need in the pursuit of higher education. And the man behind this motley assortment is Chuck Wingo.

Born in Virginia and raised in Kentucky, he came to Atlanta to go to Georgia Tech, graduating with a degree in industrial systems management. And just as his father predicted, he married a Georgia girl. He is also the father of a college-aged son. Warm, energetic and intelligent, Mr. Wingo happily invited me into his cheerfully cluttered office to talk. Quoting from literature, stressing his love of OU and inquisitive in return, we discussed Mr. Wingo's role at Oglethorpe.

JBR: How long have you been at Oglethorpe? How did you come to be here?

CW: I have been here 25 years. Prior to coming to OU, I worked for a New York bookstore company, Brentano's. Before that, I was at Macy's, so I have a strong retail background. When I took this job, I told OU I would only commit to two years. However, I ended up being seduced by Oglethorpe. Of all my jobs, I am proudest of my work here. I consider this bookstore to be a supply depot in the war on darkness.

JBR: What elements of the business do you like best? Least?

CW: I like that we are supporting the academic goals of the classroom and the students. One of my biggest aggravations is getting late textbook orders. I also feel helpless over the prices of books. I do think they are outrageous.

JBR: I've seen the poster in your store explaining how the book costs are divided, but does this really explain why they are so high?

CW: Not to oversimplify, but it really is the fault of the publishers. Because so many students buy used books, the publishers constantly put out new versions to compete; these versions often are almost exactly the same as the previous versions. We order more books from secondary sources than from the publishers in an effort to help lower costs for our students.

JBR: How has technology affected the business?

CW: It has not helped the return of the university's investment. Much like the effect of Wal-Mart on small towns, the internet has hurt us. However, our motto is "right book, right time, right price;" to make sure we live up to this, we are the only college bookstore in the state that discounts new books.

JBR: Other than the effects of technology, what other changes have you seen over the years? And what changes would you like to see in the near future?

CW: I often find that students these days are amazed at their class reading lists. Also, due to our 24/7 society, especially with the internet, we no longer have much early morning business. I don't wish to sound petty, but as for changes in the future, I would like textbook orders placed in a more timely manner. I also would like to have the bookstore remodeled with up-to-date technology.

JBR: What is a typical day like for you?

CW: Like any public retail store, we have a wide variety of products to sell. This environment involves planning, organization and control. I would also say that we are responsible for information processing. Communication is so important — how do we understand each other? How do we work together to accomplish goals? The ability to massage information and take advantage of that information is very powerful.

JBR: Who else works in the store?

CW: Sheryl Murphy, who is the assistant bookstore manager, and I have about 15-16 employees in the store per week, working approximately ten hours a week. We try to work with the students' schedules, tests, etc. Oglethorpe also has the highest percentage of work-study students than any school in Georgia. We also try to have staff available in the afternoons for the evening degree program students.

JBR: Do you have any favorite memories of your years here?

CW: When the predecessor to the PATH academy was dedicated, Steven Schmidt, an OU alum and World War II pilot (who's plane was named The Stormy Petrel!), was at the ceremony with a Japanese businessman who was also in the war. Although these men had been enemies during the war, education brought them together. I also have always enjoyed hearing from students after they graduate.

JBR: Do you plan to retire any time soon?

CW: No! I have a son in college.

JBR: When you do retire, how do you plan to spend your time?

CW: I will possibly travel, hopefully do some backpacking and will read.

JBR: Is that how you spend your personal time now?

CW: I read all the time.



Jennifer Beck Ross is a Blue Ridge, Georgia native and sophomore communications major in the evening degree program. To contact her, please send email to jross@oglethorpe.edu.

Photos by Julie Benz-Pottie.

The bookstore's normal hours of operation are 9:30 to 6:00 Monday through Thursday, and 9:30 to 5:00 on Fridays. The bookstore is typically closed on Saturdays, except during special on-campus events. The Bookstore is located on the lower level of Hearst Hall.





OGLETHORPE
UNIVERSITY

4484 Peachtree Road
Atlanta, GA 30319
www.oglethorpe.edu
(keyword: evening)



If you have any story suggestions or if you would like to join *The Oglethorpe Night Cap*, please send an email to Nick Moreno at n.moreno@oglethorpe.edu.

Make a Life. Make a Living. Make a Difference.

Evening Program Office and Staff Contact Information

Front Office: 404.364.8383
Fax: 404.364.8437

Office Hours:
Monday — Thursday: 8:30 a.m. to 7:00 p.m.
Friday: 8:30 a.m. to 4:00 p.m.

Annie Hunt Burriss
Associate Provost for Evening Degree Program and Deputy to the President for Community Relations
404.364.8372
aburriss@oglethorpe.edu
Currently on leave.

Nancy Keita
Director
404.364.8370
nkeita@oglethorpe.edu

Wayne Leon
Assistant Director of Advising and Recruitment
404.364.8314
wleon@oglethorpe.edu

Kerry Reid
Assistant Director of Admissions
404.504.3428
kreid@oglethorpe.edu

Angie Dewberry
Assistant Director of Advising and Curriculum Development
404.364.8376
adewberry@oglethorpe.edu
As of December 4.

Must Have Campus Information

Business Office — Lupton Hall

Mondays, Tuesdays and Fridays from 8:30 a.m. to 5:00 p.m. and on Wednesdays and Thursdays from 8:30 a.m. to 6:00 p.m.
404.364.8302

Campus Safety — Gatehouse

Campus Safety is available at on-campus extension 1998.
404.504.1998

Career Services — Emerson Student Center

Mondays, Tuesdays, Thursdays and Fridays from 9:00 a.m. to 5:00 p.m. and on Wednesday from 9:00 a.m. to 8:00 p.m. Other times are available by appointment.
404.364.8533

Counseling Services — Emerson Student Center

The Center for Counseling Services offers individual, group and couples therapy as well as outreach and consultation. Please call to make an appointment.
404.364.8456

Financial Aid — Lupton Hall

Mondays, Tuesdays and Fridays from 8:30 a.m. to 5:00 p.m. and on Wednesdays and Thursdays from 8:30 a.m. to 6:00 p.m.
404.364.8354

IT Services — Goodman Hall

The campus computer lab in Goodman Hall is available to students 24/7. The IT Help Desk is open Mondays through Fridays from 8:30 a.m. to 5:00 p.m.
404.364.8518

Office of the Registrar — Lupton Hall

Mondays, Tuesdays and Fridays from 8:30 a.m. to 5:00 p.m. and on Wednesdays and Thursdays from 8:30 a.m. to 6:00 p.m.
404.364.8315

Oglethorpe Bookstore — Hearst Hall

Mondays through Thursdays from 9:30 a.m. to 6:00 p.m. and on Fridays 9:30 a.m. to 5:00 p.m.
404.364.8361

The Philip Weltner Library

Mondays through Thursdays from 8:30 a.m. to 10:00 p.m., Fridays from 8:30 a.m. to 5:00 p.m., Saturdays from noon to 5:00 p.m. and Sundays from 2:00 to 10:00 p.m.
404.364.8511

Weather Advisory Line

In case of severe weather or other emergencies, Oglethorpe University will use the Weather Advisory Line to communicate appropriate information to our students, including school closings.
404.504.1800

