



# OGLETHORPE NIGHT CAP

*A newsletter written and produced by students of the Evening Degree Program*

MAKE A LIFE . MAKE A LIVING . MAKE A DIFFERENCE

## Reversing the Zombie Life: The Transformative Power of Oglethorpe University

CHRIS MATTOX  
CONTRIBUTING WRITER  
*ORGANIZATIONAL  
MANAGEMENT  
EDP CLASS OF '13*

I was a weird kid. What I mean is, I was awkward, shy and somewhat troubled. My particular weirdness has lasted longer than with most people.

I recall as a teenager driving past Oglethorpe on many occasions. There was a sort of mythology that accompanied the university. I'd heard countless stories: "That's where the rich kids go to school," or "That's the Harvard of the south". I was drawn to the architecture of the place over and over. It was just so beautiful. What kinds of things must they teach in there? I felt certain I didn't belong in mystical, magical places. I was just the weird kid.

Life moved on and I simply did my best to keep up. If you never had the chance to attend college, you know what I mean. College becomes an old dream, a wish never fulfilled. It falls back into the recesses of your mind with all the other dreams you suppose will never come true, like sailing around the world or becoming a famous architect. You accept the fact that you will never become all the things you dreamed of. There's not enough time and you're just insignificant little you. Your visible life is difficult, but you inner life becomes unbearable.

Sometimes you get swept up in conspicuous consumerism and the pursuit of the only type of life you believe you can have. You get up every day and march off to the same dead-end job. You eat the same food, watch the same television shows, and fight the same nightmares in your sleep. The color begins to bleed out of your life. It doesn't happen all at once, but slowly, over time.



One day you wake up and the world has gone gray. You don't quite know what color it should be, but you recall that it did, at one time, have many colors — colors so vibrant and so numerous. You realize that it's too late for you, and you'll never get the "dream" job, you'll never have an education, and you'll never exceed to the lofty heights. You feel resigned to whatever fate and chance may throw at you. You have given up and joined the ranks of the living dead. At this stage, years pass.

Maybe like me, although you knew about Oglethorpe, you never thought you could get in. Maybe you think you can't do the work; it's just been too

long since you were in school last. Perhaps you think it'll cost too much; you're stretching your budget as it is. Or you just don't feel good enough for Oglethorpe. When you look through job listings and realize that you can't compete, you resent college graduates. I felt all of these things. Maybe you feel them too.

Someone who loves me, more than I understand, persuaded me to apply to Oglethorpe. With no hopes of getting in, I sent the application and thought no more of it. When a letter arrived from Oglethorpe, however, I felt differently. I held the unopened letter for what seemed like forever, simply staring at the return address. The simple lettering seemed to bear so much gravity. As if this letter

would either confirm or deny my validity as a human being.

I opened the letter slowly, as if this would minimize any adverse impact on my self-esteem. The letter began with "Dear Chris, Congratulations!...". I would love to tell you some kind of bogus tough-guy story. I'd love to say I yelled something manly and hi-fived someone and went drinking and pillaging to celebrate. But I didn't. I sat and wept for every time I wasn't good enough, had failed, or was left behind. I wept for joy and relief.

When I went to the EDP Open House, I picked up a copy of *The Night Cap*. I sincerely hope other people will do the same. If you're reading this and wondering, stop wondering. Are the courses difficult? Yes. Will you be exhausted? Yes. Will it change your life for the better? Yes, yes and yes. But it will also restore the pigment and possibility to your world. New doors will open up in your head and new opportunities will open up in your life. Whatever your excuses for not applying, throw them out the window. Don't live the zombie life. There's a whole world of possibilities right off Peachtree Road. You can do this. I'll say to you now the words that encouraged me to apply: I believe in you!

### INSIDE THIS ISSUE:

- |                                  |   |
|----------------------------------|---|
| <b>Reversing the Zombie Life</b> | 1 |
| Chris Mattox                     |   |
| <b>We Are Here!</b>              | 2 |
| Laura Sokoloskis                 |   |
| <b>Scholarship Opportunity</b>   | 3 |
| Travis A. Kirspel                |   |
| <b>Come Blow Your Horn!</b>      | 3 |
| Dr. Irwin Ray                    |   |



**OGLETHORPE**  
UNIVERSITY

# We Are Here!

LAURA SOKOLSKIS  
CONTRIBUTING WRITER  
*PSYCHOLOGY*  
*EDP CLASS OF '09*



Yes, we the EDP students of Oglethorpe University are here and need to be recognized. We are here almost every night, and we are here when the day students are not; however it seems that we go unnoticed. Over the last several semesters I have heard many of the same complaints by my fellow students that I myself have expressed. I dare to say that I speak for all of the EDP students when I say that we love attending OU and are pleased to be a part of such a great community; otherwise we would not be here. However, I have a few issues to point out along with a few suggestions that may or may not help to solve these issues. If they are do-able, great, and if not, I only hope that they will lead to other ideas that might work in solving these small issues.

The final exam night of last semester my fellow classmates and I arrived at our classroom door in Hearst only to find that we were locked out of our room as well as every other room in the building. In addition to the doors being locked, all of the tables and chairs were stacked in the hallways. When we were finally able to get into a classroom, we had to move the furniture in as well just to take our exam. We were already stressed over finals

and expected to be able to find our room prepared for us. We were forgotten.

Again, the first night of class in the current session, I was approaching the doors to Robinson and before I could get there a security guard came by and locked the front doors then disappeared to the side entrance. I followed him there and when I got there the door was locked, and he was not there. Thankfully, he had gone inside and, after knocking, I was able to get into the building. We were forgotten.

A simple solution to this problem would be to make sure that the security department has and is familiar with the day, times and classrooms we will be in from the beginning to the end of each session. I see no reason why any of the students should have to deal with a simple organization problem on the part of Oglethorpe University's staff.

When I first wrote this article my second issue was the library hours. I was pointing out the fact that we EDP students need access to the library on the days and during the hours before, between and after class. A few weeks later I was happy to see new hours, posted on the library door, that are conducive to the EDP schedule. Thank you Oglethorpe Administration! I can

now only express the hope that in addition to the new hours the library will be accessible beginning on the day of the EDP students return from any scheduled break as well as remain open until our break begins. Typically the EDP seasonal breaks begin after the day students' break begins and end before the day students' break ends. Here I must say that EDP was not forgotten but remembered.

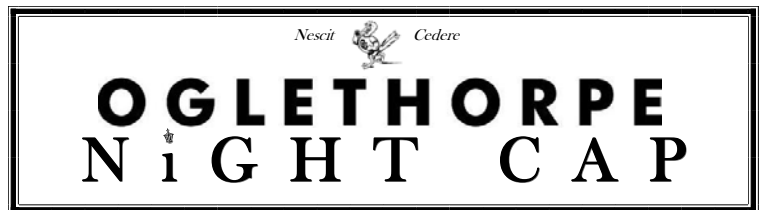
And last but not least, we EDP students need to be notified as soon as possible if one of our classes has been cancelled. An email is a great way to do this if done early enough in the day. However if a class is cancelled at the last minute, say 4:30 p.m. or later, each student in the class should receive a phone call. Again, while email is great, someone who works or lives a far distance is most likely already on their way, if not already on campus. A simple phone call would save us all time and money — both of which are precious to the busy EDP students.

Again, this may or may not work, but if the staff in the EDP office does not have time to make all those phone calls, then rally some student volunteers. If a spreadsheet is made for each class with the

name and number of each registered student, a staff member could simply shoot one email to the student volunteer with the needed information, and the student would be responsible for notifying that particular group of students that their class has been cancelled. We are forgotten.

I understand that some of my suggestions include the help of students. Speaking for myself, I would be more than willing to help our community run smoothly. As students of Oglethorpe University we belong to something greater than every man for himself; we are part of one big family. In order for any family to run smoothly all members must come together and do what is needed to solve issues and meet the needs of ourselves and the rest of the family members. From this article I only ask that the EDP students be heard and recognized and that the suggestions made are taken seriously and implemented or, if they are not reasonable, other solutions for these problems are implemented.

We are here.



*A newsletter written and produced by students of the Evening Degree Program*

MAKE A LIFE. MAKE A LIVING. MAKE A DIFFERENCE.

EDITOR

Travis A. Kirspel

FACULTY ADVISOR

Dr. Anne Rosenthal

STAFF ADVISOR

Dr. John Eaves

CONTRIBUTING WRITERS

Chris Mattox

Laura Sokoloskis

Dr. Irwin Ray

2009 STAFF WRITERS

[Your Name Here]

[or Here]

[or Here]

[Seriously!]

**The NightCap is looking for Staff and Contributing Writers, Artists, Intellectuals, Poets, Provocateurs and the likes for 2008/2009.**

**Please email submissions, questions, musings or comments to:**

**tKirspel@oglethorpe.edu**

The Oglethorpe NightCap is Oglethorpe University Evening Degree Program's official student newspaper, an editorially independent publication. Opinions expressed in this publication are those of the authors, and are not necessarily shared by the staff of The Oglethorpe NightCap or Oglethorpe University Evening Degree Program.

## Scholarship Opportunity for Female EDP Students: GEWN Accepting Applications for 2009/2010 Leader of Tomorrow Scholarship

TRAVIS A. KIRSPEL  
NIGHTCAP EDITOR  
HISTORY & PSYCHOLOGY '08

The Georgia Executive Women's Network is now seeking applicants for the 2009-2010 "Leader of Tomorrow" Scholarship. This financial aid and networking opportunity is open to female non-traditional students (at least 24 years old) in the Atlanta area who have completed at least one year of undergraduate study and have returned to college after a break in their education.

Since the Scholarship Program began in 1998, GEWN has awarded over \$75,000 to 33 exceptional students from 10 schools in the Metro area. For the 2009-2010 academic term, the group will offer two \$3,000 scholarships to Atlanta-area students.

Award recipients are also recognized at the Annual GEWN Scholarship Luncheon, which has featured keynote speakers like Atlanta City Council President, Lisa M. Borders, in past years.

In order to qualify, applicants must be female students, at least 24 years of age by August 1, 2009, enrolled full-

time for the 2009-2010 academic year, have a grade point average of at least 3.0, and have demonstrated leadership abilities in school, work, and/or community.

Submissions must include the GEWN Scholarship Application (available from the EDP or Financial Aid offices), a current resume or biographical statement, two letters of recommendation, an official transcript, and a typed essay (up to 500 words) that addresses the question:

*What are your professional/community goals and objectives after you complete your college education?*

Beyond the Leader of Tomorrow Scholarship Program, the Georgia

Executive Women's Network also hosts many events across the Atlanta area to promote the roles and influence of women.

The organization sponsors leadership panels and forums at Atlanta Women's Alliance events and colleges and universities throughout the area. These discussions provide members the opportunity to expound upon the events that helped to shape their personal and professional lives.

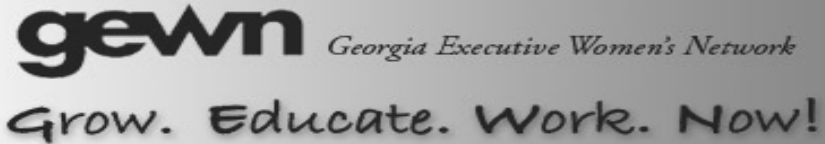
GEWN will also be hosting a Luncheon Meeting: "Convert Your Chaos in to Cash: Tap your right brain for ideas and products that sell" on April 9th from 11:30 to 1:15 at the Atlanta Fish Market.

Patrice Dickey, author of *Your Guide to the Life You Love* will be

discussing tips on how to broaden your professional skill-set, harness your creativity and develop new income potentials. She will also share her secrets on how to be invited to the world's top spas as a complementary guest!

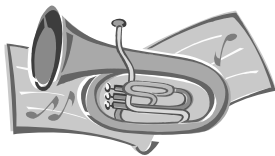
The application postmark deadline for the GEWN Leader of Tomorrow Scholarship is April 15 2009, so get moving, ladies! This is a tremendous opportunity for some financial aid and networking exposure.

For more information, pick up an application from the Financial Aid or EDP offices or, for any other information on the group and their events, check them out on the web at [www.GEWN.org](http://www.GEWN.org).  
Good luck!



## New Concert Wind Band & Pep Band Forming: Come Blow Your Horn!

DR. IRWIN RAY  
DIRECTOR OF  
MUSICAL ACTIVITIES

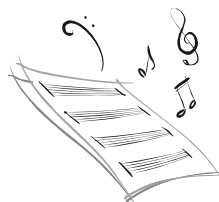


Musical Activities at Oglethorpe is pleased to announce the formation of two new instrumental ensembles that are open, at no cost, to all Oglethorpe students, including our Evening Degree Program. The new Oglethorpe Winds (concert winds: brass, woodwind, and percussion) and the Oglethorpe Pep Band (athletic band to play for home games using various instrumentation including guitars, keyboard, drums, etc.) will rehearse on Wednesday evenings in the Grenwald Room of the Emerson Student Center. The Oglethorpe Winds will meet 6:30-7:30 p.m. and the Pep Band from 7:30-8:00 p.m. Anyone interested should come to the rehearsals beginning Wednesday, Feb. 11 and notify the director, Dr. Chris Chang ([ecchang@comcast.net](mailto:ecchang@comcast.net)).

Dr. Chang has directed similar groups

at Virginia Polytechnic and East Carolina University and holds a Doctor of Education degree in wind music education. She is an excellent conductor, an experienced teacher and has one of the largest band programs in its classification in metro-Atlanta. Those present for the organizational meeting were as excited about her as she was about the possibilities of these two new groups.

If interested, definitely investigate these great, fun new groups; if you play but do not have an instrument, Dr. Chang will do her best to get one for you. All you need to do is let her know and show up for rehearsal. There are no membership fee or costs associated with joining either ensemble. For additional information, feel free to e-mail or phone Oglethorpe's Director of Musical Activities, Dr. Irwin Ray (404-364-8429 or [IRay@oglethorpe.edu](mailto:IRay@oglethorpe.edu)) or Dr. Chang.



### EDP ANNOUNCEMENTS

Check In to Check Out!

**Be sure to stop by the front desk at the Library to register yourself in the system at the start of every semester so that you can check out books and, more importantly, access Galileo from off campus! You can call 404.364.8511 for more information or assistance.**

Open Houses

#### 2009 Spring Open House Dates & Times:

Saturday, January 10th, Noon to 2 p.m.

Saturday, February 21st, Noon to 2 p.m.

Saturday, March 14th, Noon to 2 p.m.

Saturday, April 11th, 1pm to 3 p.m.

Saturday, May 23rd, Noon to 2 p.m.

**Remember, all students who refer friends to the Oglethorpe Evening Degree Program Open Houses will receive book vouchers for their encouragement.**

OO License Plates!

**Beginning Jan. 1, 2009, the Georgia Department of Revenue will be offering an Oglethorpe-branded license plate!**

**Go to [www.Oglethorpe.edu](http://www.Oglethorpe.edu) and search for keyword "License Plate" for further details.**

# CALENDAR & CAMPUS INFORMATION

## EDP Spring 2009 Academic Calendar

### Session I

Monday	January 5	First day of Classes; Session I Tuition is Due
Monday	January 12	Last Day to Drop/Add; Last Day to Receive 100% Refund; End of Late Registration
Monday	January 19	Martin Luther King, Jr. Holiday (No Class)
Monday	February 6	Last Day to Withdraw with a "W" Grade; "WF" after this date
Wednesday	February 11	Oglethorpe Day Convocation
Tuesday	February 24	Final Exams for Tuesday/Thursday Classes
Wednesday	February 25	Final Exams for Monday/Wednesday Classes
Saturday	February 28	Final Exams for Saturday Classes

### Session II

Thursday	March 5	First Day of Classes; Session II Tuition is Due
Wednesday	March 11	Last Day to Drop/Add; Last Day to Receive 100% Refund
Sunday— Sunday	March 15-22	Spring Holidays (No Classes)
Monday	March 23	Classes Resume
Monday— Friday	April 6-10	Registration for Summer and Fall Sessions
Tuesday	April 14	Symposium in the Liberal Arts and Sciences
Friday	April 17	Last Day to Withdraw with a "W" Grade; "WF" after this date
Saturday	May 2	Final Exams for Saturday Classes
Monday	May 4	Final Exams for Monday/Wednesday Classes
Tuesday	May 5	Final Exams for Tuesday/Thursday Classes
Saturday	May 9	Commencement

## EVENING DEGREE PROGRAM INFORMATION

### OFFICE HOURS

MONDAY THROUGH THURSDAY: 9:30 A.M. TO 6:30 P.M.  
FRIDAY: 9:30 A.M. TO 4:30 P.M.

### CONTACTS

FRONT OFFICE: 404.364.8383

JASMINE MCMILLAN  
RECRUITING & ACADEMIC ADVISING  
404.504.3428  
JMCMILLAN@OGLETHORPE.EDU

WAYNE LEON  
ASSOCIATE DIRECTOR  
OF ADVISING AND RECRUITMENT  
404.364.8314  
WLEON@OGLETHORPE.EDU

DR. JOHN EAVES  
PROGRAM DIRECTOR  
404.364.8370  
JEAVES@OGLETHORPE.EDU



**OGLETHORPE**

UNIVERSITY  
WWW.OGLETHORPE.EDU  
(KEYWORD: EVENING)  
4484 PEACHTREE ROAD  
ATLANTA, GA 30319

## MUST-HAVE CAMPUS INFORMATION

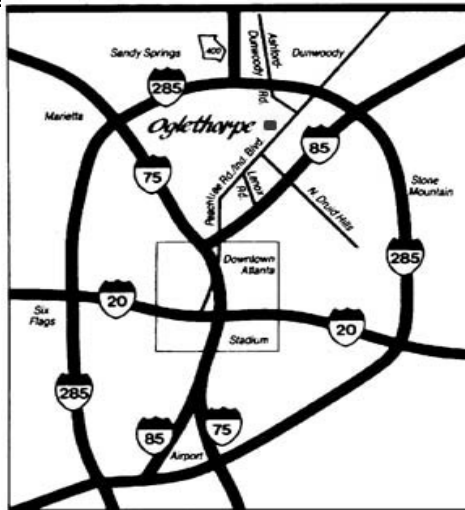
**Business Office:** Lupton Hall 404.364.8302  
Monday, Tuesday and Friday from 8:30 a.m. to 5 p.m.;  
Wednesday and Thursday from 8:30 a.m. to 6 p.m.

**Career Services:** Emerson Student Center 404.364.8533  
Monday, Tuesday, Thursday and Friday from 9 a.m. to  
5 p.m. and Wednesday from 9 a.m. to 8 p.m.  
Other times are available by appointment.

**Counseling Services:** Emerson Student Center 404.364.8456  
The Center for Counseling Services offers individual, group  
and couples therapy as well as outreach and consultation.  
Please call to make an appointment.

**Financial Aid:** Lupton Hall 404.364.8354  
Monday, Tuesday and Friday from 8:30 a.m. to 5 p.m.;  
Wednesday and Thursday from 8:30 a.m. to 6 p.m.

**Office of the Registrar:** Lupton Hall 404.364.8315  
Monday, Tuesday and Friday from 8:30 a.m. to 5 p.m.;  
Wednesday and Thursday from 8:30 a.m. to 6 p.m.



**IT Services:** Goodman Hall 404.364.8518  
help@oglethorpe.edu

The campus computer lab in Goodman Hall is available to  
students 24/7. The IT Help Desk is open Monday through  
Friday from 8:30 a.m. to 5 p.m.

**Oglethorpe Bookstore:** Hearst Hall 404.364.8361  
Monday through Thursday from 9:30 a.m. to 6 p.m. and  
Friday 9:30 a.m. to 5 p.m.

**The Philip Weltner Library** 404.364.8511  
Monday through Thursday from 8:30 a.m. to 10 p.m.,  
Friday from 8:30 a.m. to 5 p.m., Saturday from noon to  
5 p.m. and Sundays from 2 p.m. to 10 p.m.

**Campus Safety:** Gatehouse 404.504.1998  
Campus Safety is available at on-campus extension 1998.

**Weather Advisory Line** 404.504.1800  
In case of severe weather or other emergencies, Oglethorpe  
University will use the Weather Advisory Line to  
communicate appropriate information to our students,  
including school closings.